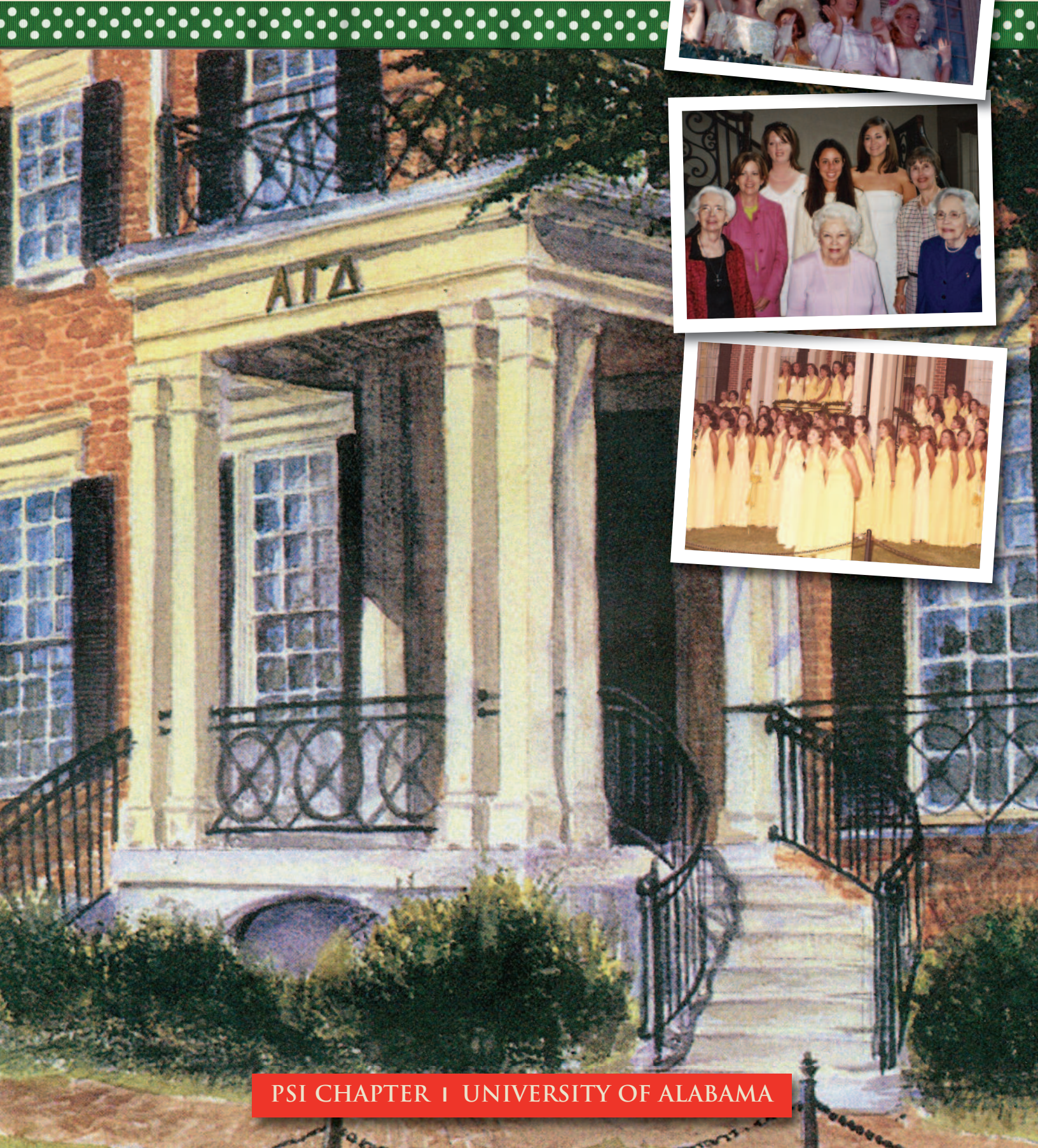


ALPHA GAMMA DELTA



Lasting Loyalty



PSI CHAPTER | UNIVERSITY OF ALABAMA

Remembering Our Past...

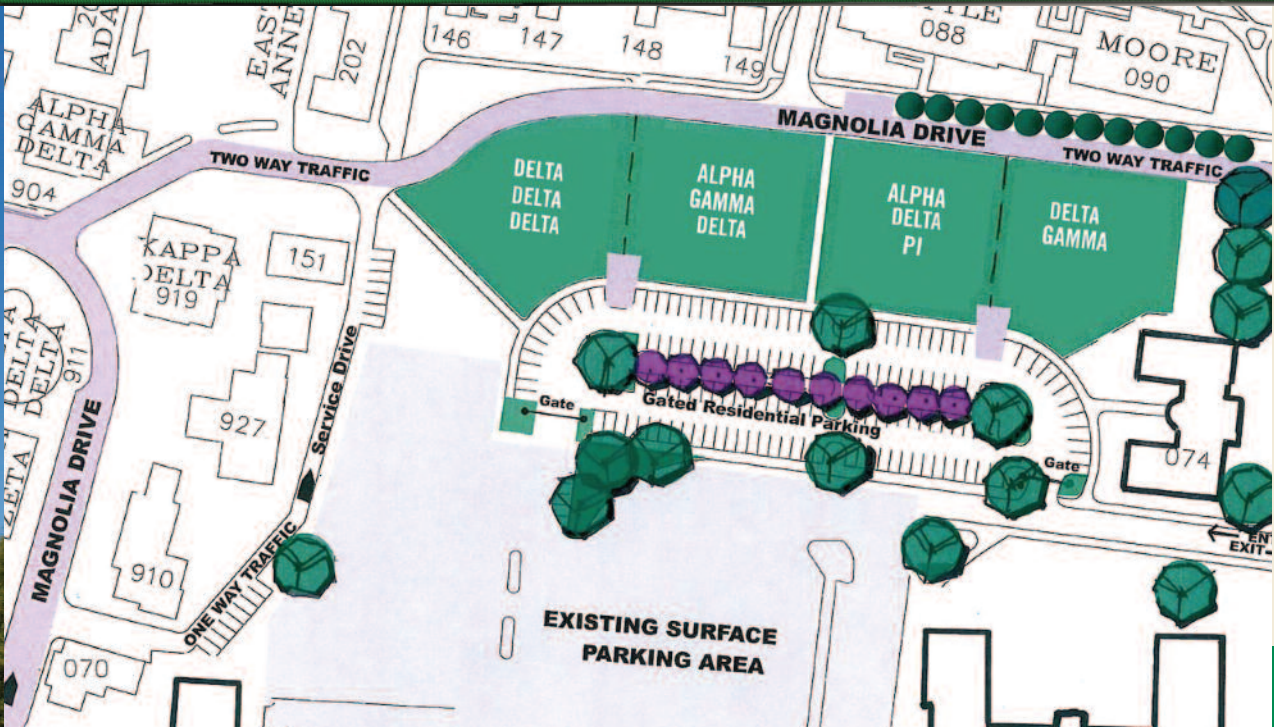
For over 90 years, the Psi Chapter of Alpha Gamma Delta has been at the heart of Greek life at University of Alabama. With more than 2,500 initiates, Psi has nurtured and sustained young women—students who left Tuscaloosa to become successful women like you. This tradition is stronger today than ever! Values learned through Psi greatly enhance each student's personal and professional development. Being an Alpha Gam leaves a lasting impression on women from all walks of life, encouraging sisters to excel in whatever path they choose.

Like other women's fraternities, Alpha Gamma Delta is an organization dedicated to impacting and influencing the lives of women. Psi members are leaders in the classroom, on campus, and in the community, and our alumnae carry on this same success in their own business and civic endeavors. Alpha Gamma Delta leaves a lasting impression on women from all walks of life, encouraging sisters to excel in whatever path they choose. The memories and friendships that are developed through Psi last a lifetime, and the experiences are remembered long after college days are past.



... Looking to Our Future

Built on a past filled with rich tradition and history, Psi remains an outstanding chapter today. Our proud history now sets the stage for the next generation of sisters who will soon be walking in our familiar footsteps. However, if we wish for Psi to continue to be strong, we must ensure that we are providing a safe, competitive, and quality home at Alabama. Now is the appropriate time to fulfill Psi's purpose and look into securing our future. This project will allow Alpha Gamma Delta to continue touching lives in the same way it touched yours.



Building New Memories

While the Alpha Gam experience certainly involves more than just the physical structure of the sorority house, our home does play a significant role in defining our chapter. Our home on First Circle can no longer accommodate the needs of our members. Increases in overall chapter membership and changes in student needs have caused us to outgrow our space.

Like any home, our sorority house must keep up with the daily demands of the girls who live in the house and those who stop by for meals, meetings, study hall and fun. We must provide modernized living, study, and meeting spaces to serve the immediate needs of our collegiate sisters and to provide a first-class home for future Alpha Gams.

OUR PROJECT GOALS

The chapter has grown vastly over the last decade and retention numbers are high—Psi is currently at 265-plus members. Due to these numbers, our membership has outgrown the dining room and chapter room. This also makes food preparation difficult in our kitchen. The bathroom facilities and lounge areas are drastically undersized and outdated by current college campus standards. The new sorority house will provide safety, as well as an improved quality of life, to our members and those to come for many years.

The Psi House Association has been strategically planning for the future of the chapter. We are confident our partnership with UA will create an ideal future home for the Psi Chapter. Working with Holmes & Holmes Architects of Mobile, the Psi House Association has developed a tactical approach to our future.

UNIVERSITY OF ALABAMA SORORITY ROW EXPANSION

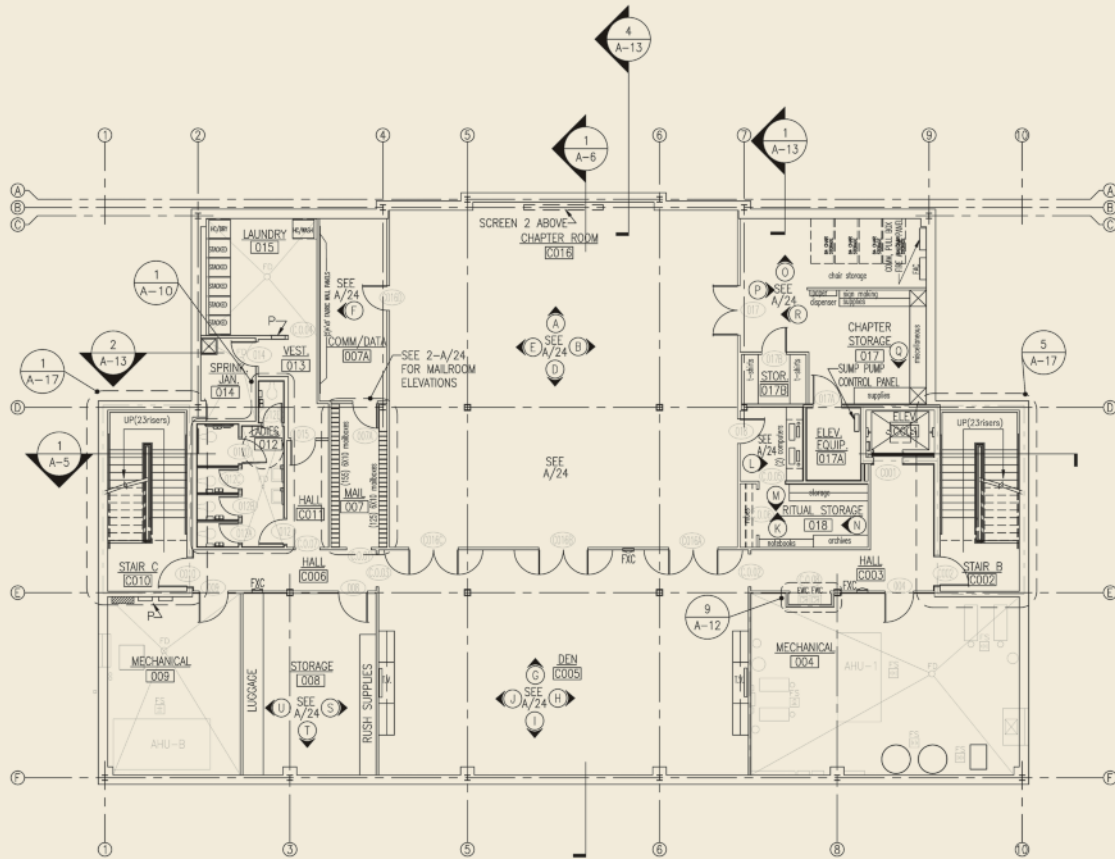
In June 2010, the Board of Trustees of the University of Alabama approved a plan that will allow for the demolition of Wilson, Byrd, Parker-Adams and New Hall in order to make way for the expansion of sorority row. The project will include the construction of four new sorority houses and the extension of Fourth Street to connect with Magnolia Drive. The move to expand sorority row comes amidst a period of record growth within the Greek community. In the last seven years, sororities have doubled in size and many have outgrown their current facilities, including Alpha Gamma Delta. Along with Alpha Gamma Delta, Alpha Delta Pi, Delta Delta Delta, and Delta Gamma were selected to construct new houses.



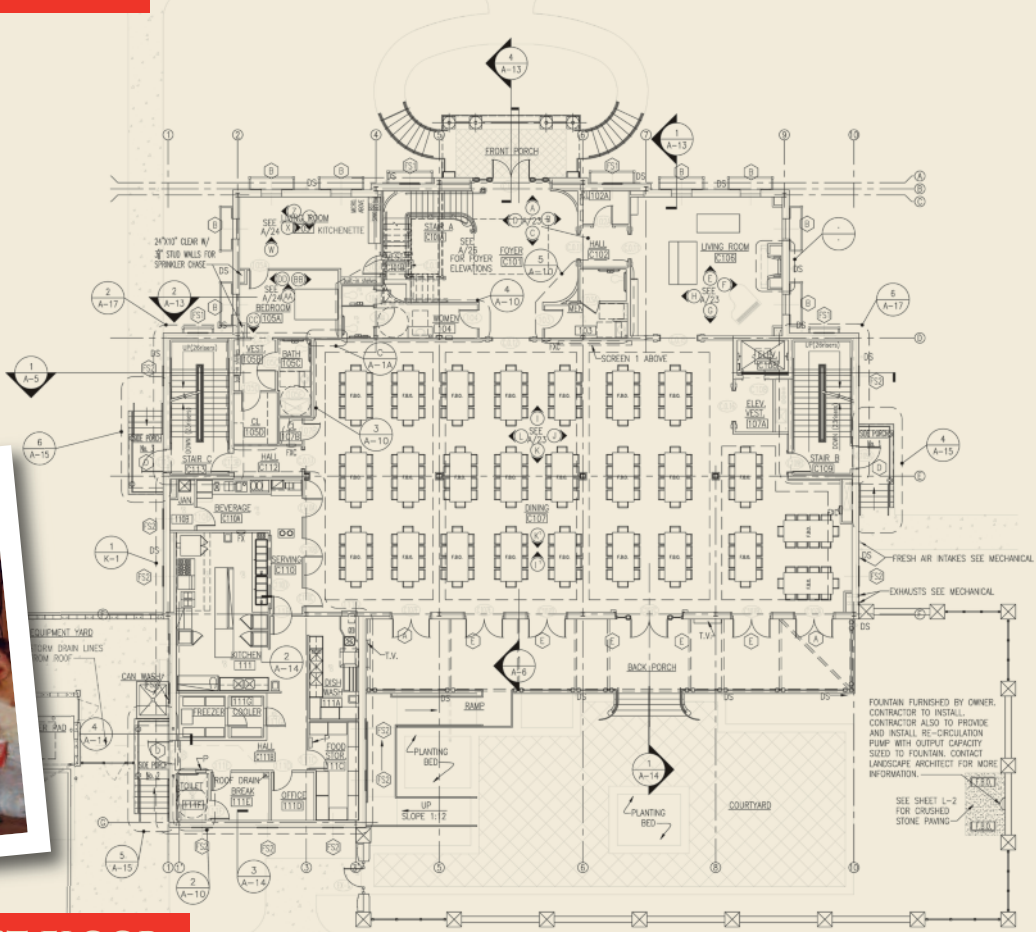
Floor Plans

PROJECT HIGHLIGHTS

- Over 30,000 total s.f. in the house
- Increased live-in capacity to 62 members
- Enlarged, multi-functional chapter room
- An elevator
- Modern, updated bathrooms
- Larger closet space for members
- Much-needed larger kitchen work area
- Housemother suite
- Enhanced on-site laundry facilities
- Private parking for students
- Back courtyard for events and reunions
- Increased chapter storage

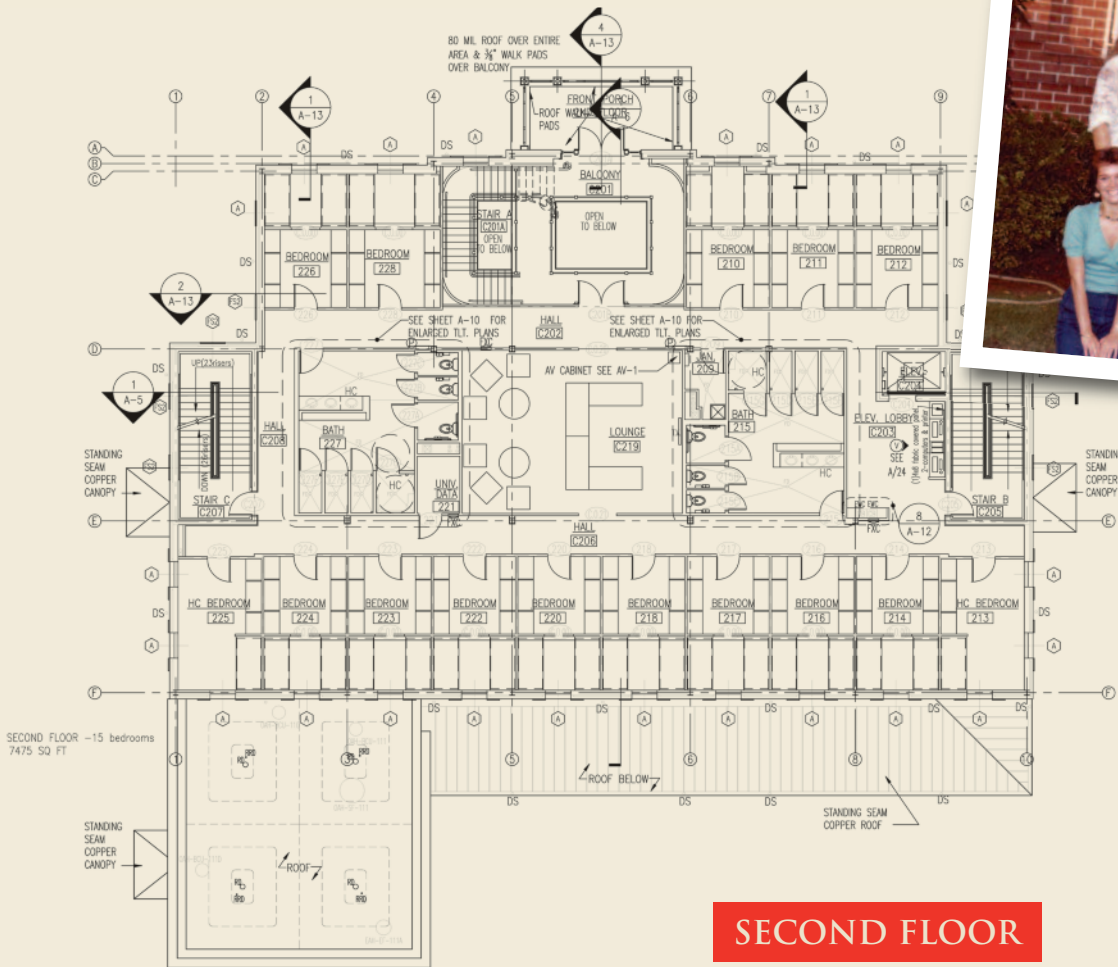


BASEMENT

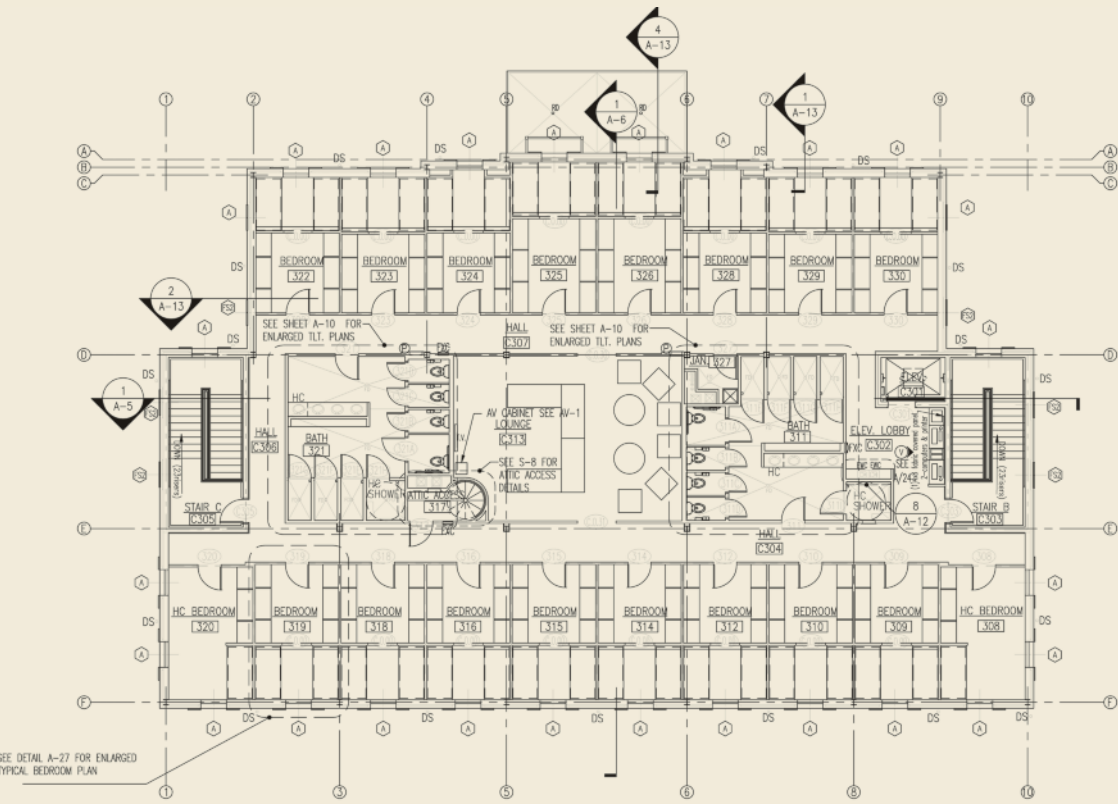


FIRST FLOOR





SECOND FLOOR



THIRD FLOOR

PROJECT ESTIMATE

Construction & Development
\$8,900,000

Including construction costs, furnishings, appliances and equipment

House Sale Revenue
\$2,200,000

University of Alabama will purchase existing house

TOTAL
\$6,700,000

A pro forma was conducted and, based on financial calculations, the chapter can adequately finance \$6.2 million. However, every dollar raised is one less dollar that current and future chapter members will have to repay after they move into their new home.

Current estimates at time of printing, may be subject to change.



Be Part of Our Future

Our investment in Alpha Gamma Delta will ensure the continued success of our chapter. College women's fraternities play a relevant role in shaping the lives of young women. Today, perhaps more than ever, there is a need for organizations dedicated to advancing women's issues; fostering values and high ideals; promoting academic achievement, leadership and citizenship; and providing emotional support for the tough challenges facing today's college students.

The collegiate women have already made a commitment to work hard in continuing the programs and traditions that have benefited the lives of so many Alpha Gams over the years. Our collegians and the volunteer leadership of Psi are committed to this major undertaking, which will allow us to rebuild our sorority house and create the standard by which others are measured at the University of Alabama.

Remember that each of us benefited from the generosity, work, and sacrifice of those who went before us. We all enjoyed the comfort and friendship Psi provided during our years at Alabama. Now it is our turn to repay the fraternity, ensuring the same, wonderful experience for others.

DONOR RECOGNITION

Each of us, simply by our presence, has contributed to the history of the Psi Chapter. How appropriate then that each of our names be entered into its halls. **Each alumna who contributes \$2,500 or more will be recognized on a prominently displayed plaque in the sorority house.** All donors contributing to the campaign will be recognized in campaign publications, unless otherwise requested.

Gifts in honor or in memory of sisters, as well as family and pledge class gifts, are welcome. Recognition in such cases will be given to both the donor and honoree.

TAX-DEDUCTIBLE GIFTS

The University of Alabama will allow for the Alpha Gamma Delta building project to be paid in fully tax-deductible dollars, with all gifts made to the University and earmarked for the Alpha Gamma Delta capital campaign. When a donor makes a tax-deductible gift to the University of Alabama for the *Lasting Loyalty* campaign, it will be recorded and reflected in her lifetime giving to the University.

MAXIMIZING YOUR GIFT

Because of the magnitude of our objectives, we are urging all alumnae to consider major gifts to the campaign. In order for each alumna to maximize her participation, gifts can be structured over a five-year pledge period. However, early gifts to the campaign are preferable to help reduce borrowing costs and overall debt for the chapter.

Office of the President

THE UNIVERSITY OF
ALABAMA
FOUNDED 1831

Alpha Gamma Delta
Psi Chapter
P.O. Box 20578
Tuscaloosa, AL 35402

Dear Psi Alumnae:

I want to offer my full support of the efforts of the Psi House Association in the *Lasting Loyalty* campaign. I am confident that your decision to construct a new chapter house at The University of Alabama will have a positive and lasting impact on the lives of future Alpha Gam sisters at The University of Alabama.

The administration has appreciated the leadership your undergraduates have provided the University for over 90 years. Alpha Gams have been known for their academic excellence, campus leadership, community service, and the personal development of its members. Adding to the rich traditions of the University and its Greek community, the women of Psi have been pacesetters for the entire sorority community at the Capstone.

I strongly support our fraternities and sororities and greatly value the contribution they make to the quality of student life at Alabama. The standards for student housing are increasing each year to support new technology and provide the sufficient space that is expected. It is, therefore, critical for Greek housing to meet and exceed these standards.

The University is committed to its valued partnership with the Greek community to provide a positive living and learning experience for its members. I am pleased the University has been able to work with your chapter's alumnae leadership to provide a location on Magnolia Drive for the new Psi house, as well as financial support to make the project economically feasible.

I applaud the launching of the *Lasting Loyalty* campaign for the Psi Chapter and offer my personal support in helping achieve these goals. I hope the alumnae of Psi will respond to this with a degree of generosity that reflects the strength of your chapter's sisterhood and a desire to see the chapter remain a positive factor in the lives of young women for generations to come.

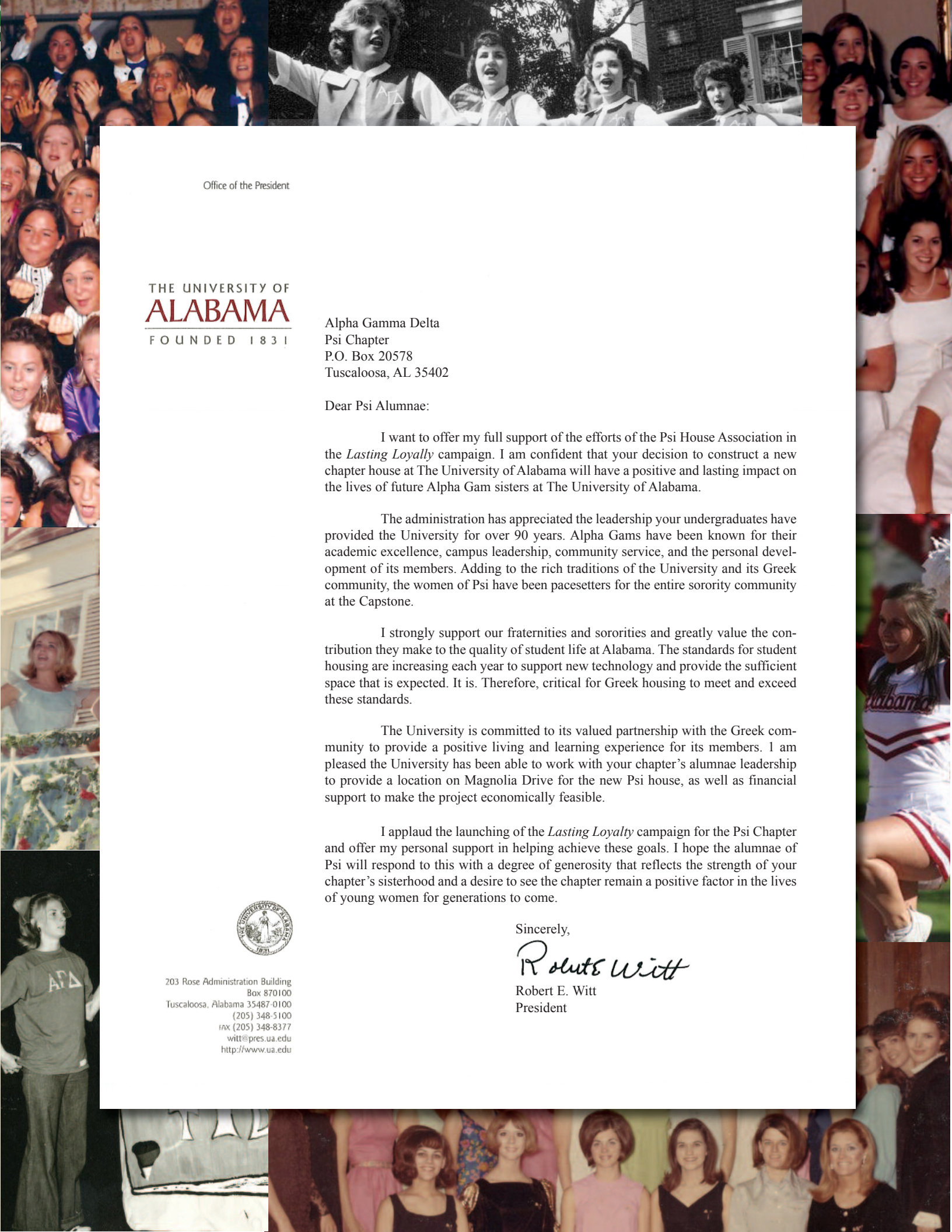


203 Rose Administration Building
Box 870100
Tuscaloosa, Alabama 35487-0100
(205) 348-5100
fax (205) 348-8377
witt@pres.ua.edu
<http://www.ua.edu>

Sincerely,

A handwritten signature in cursive script that reads "Robert E. Witt".

Robert E. Witt
President





GIVING LEVELS

Founders Society
\$50,000 and Above

First Circle Society
\$25,000 to \$49,999

Legacy Society
\$15,000 to \$24,999

Crimson Tide Society
\$10,000 to \$14,999

Diamond and Pearl Society
\$5,000 to \$9,999

Red and Buff Society
\$2,500 to \$4,999

Psi Society
\$1,000 to \$2,499

Sisterhood Society
Up to \$999

CAMPAIGN LEADERSHIP

CHAIRMEN

Nancy Richeson Siniard '74
Amy Owen Lawson '86

MEMBERS

Angie Webb '59
Alice Herren Schleusner '61
Jean Rainer Belt '61
Susan Jones Driggers '75
Becky Freeman Owen '77
Fay Smith Poole '77
Karen Coley Keene '79
Leanne Alabama Todd '81
Keller Johnson Thompson '90
Anne Martha Bernauer Corley '98